

next

La Meije

VISA Architecte

29 septembre 2023

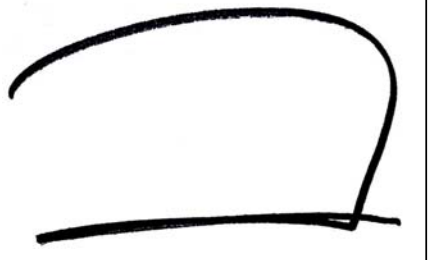
Dossier PC

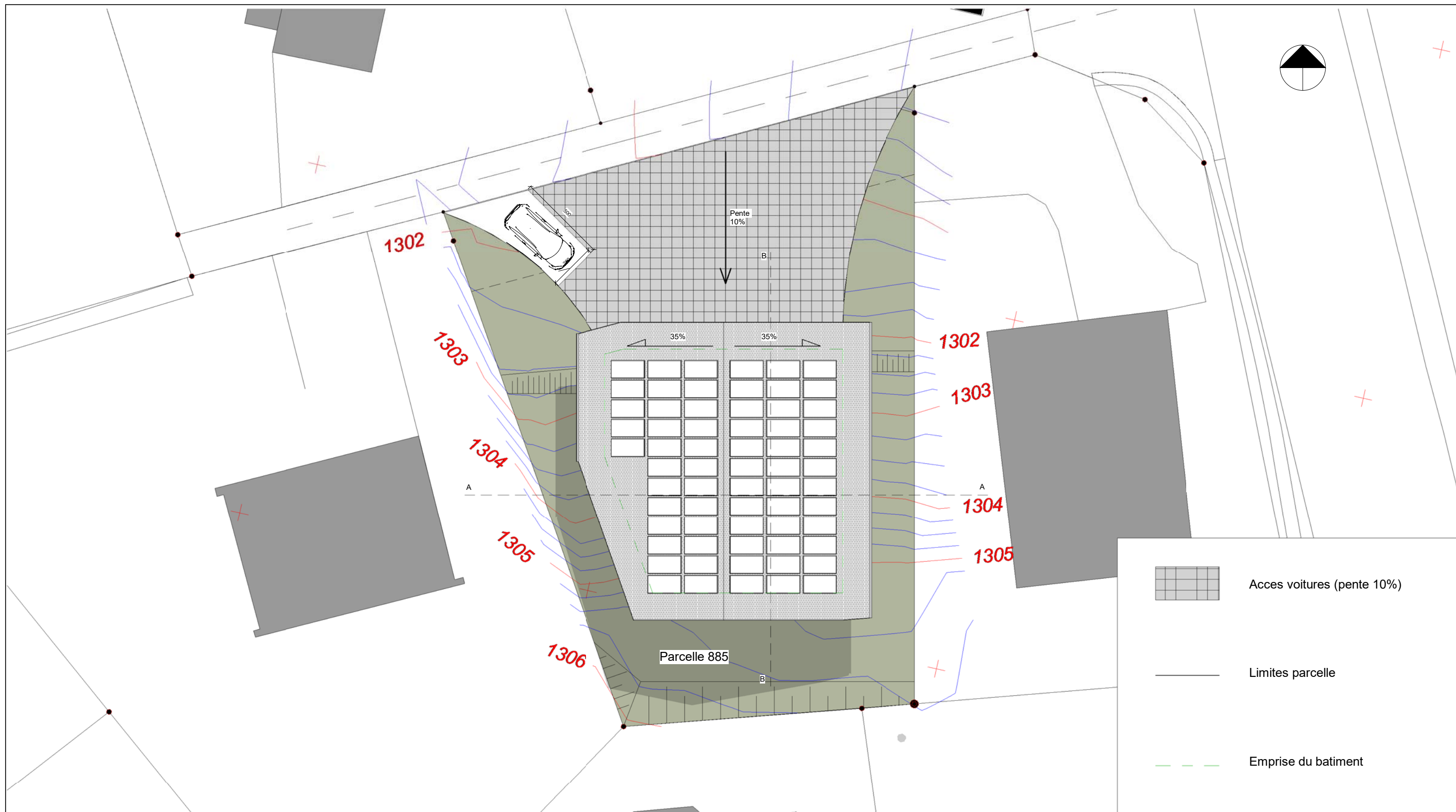
Plan Cadastral

3975 Crans-Montana

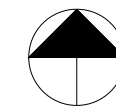
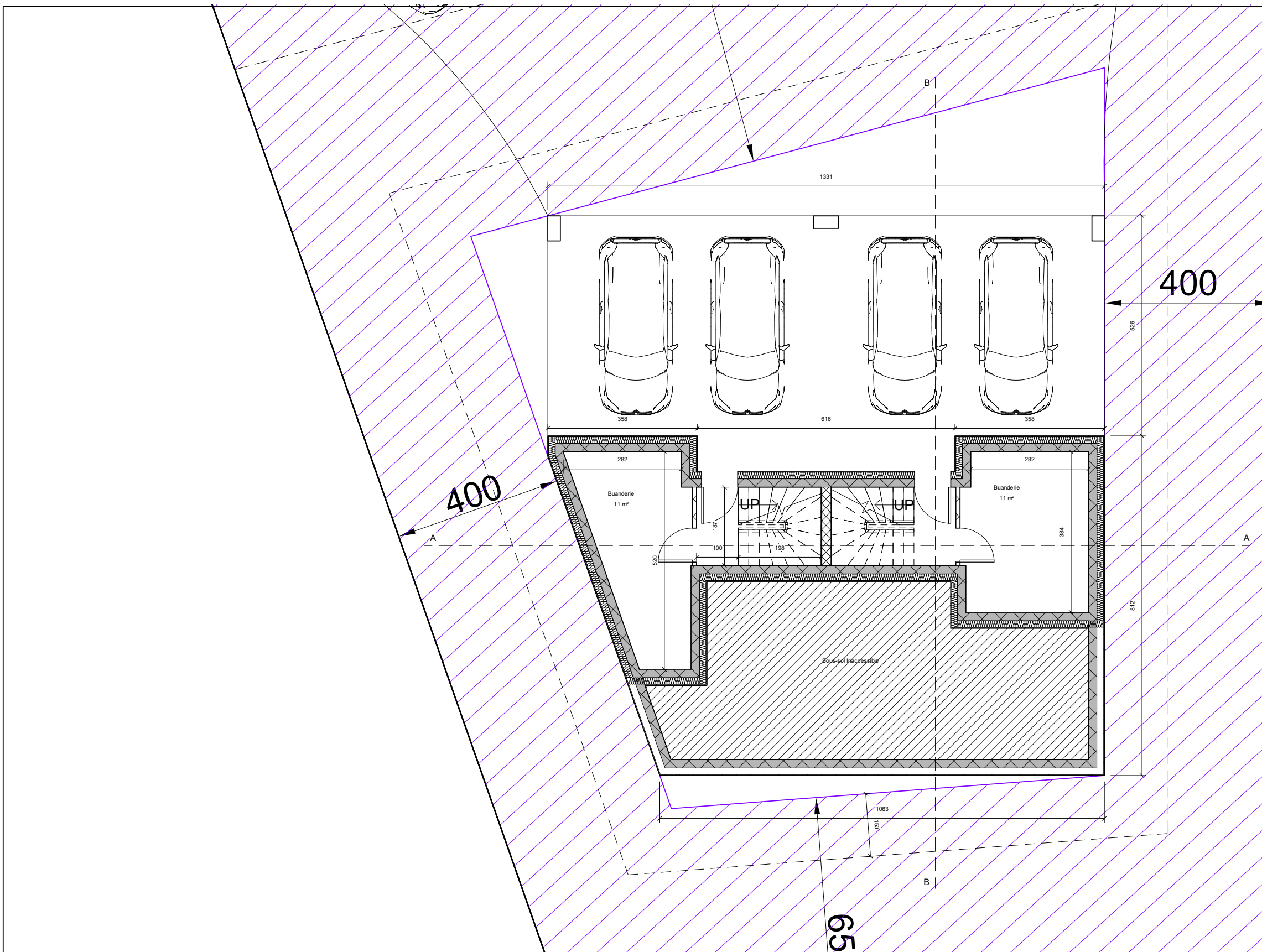
Parcelle 885

1 : 200





	<h1>La Meije</h1>			VISA Architecte
	29 septembre 2023	Dossier PC	Plan d'implantation	
	3975 Crans-Montana	Parcelle 885	1 : 200	



next

La Meije

VISA Architecte

29 septembre 2023

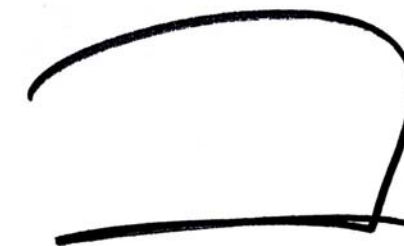
Dossier PC

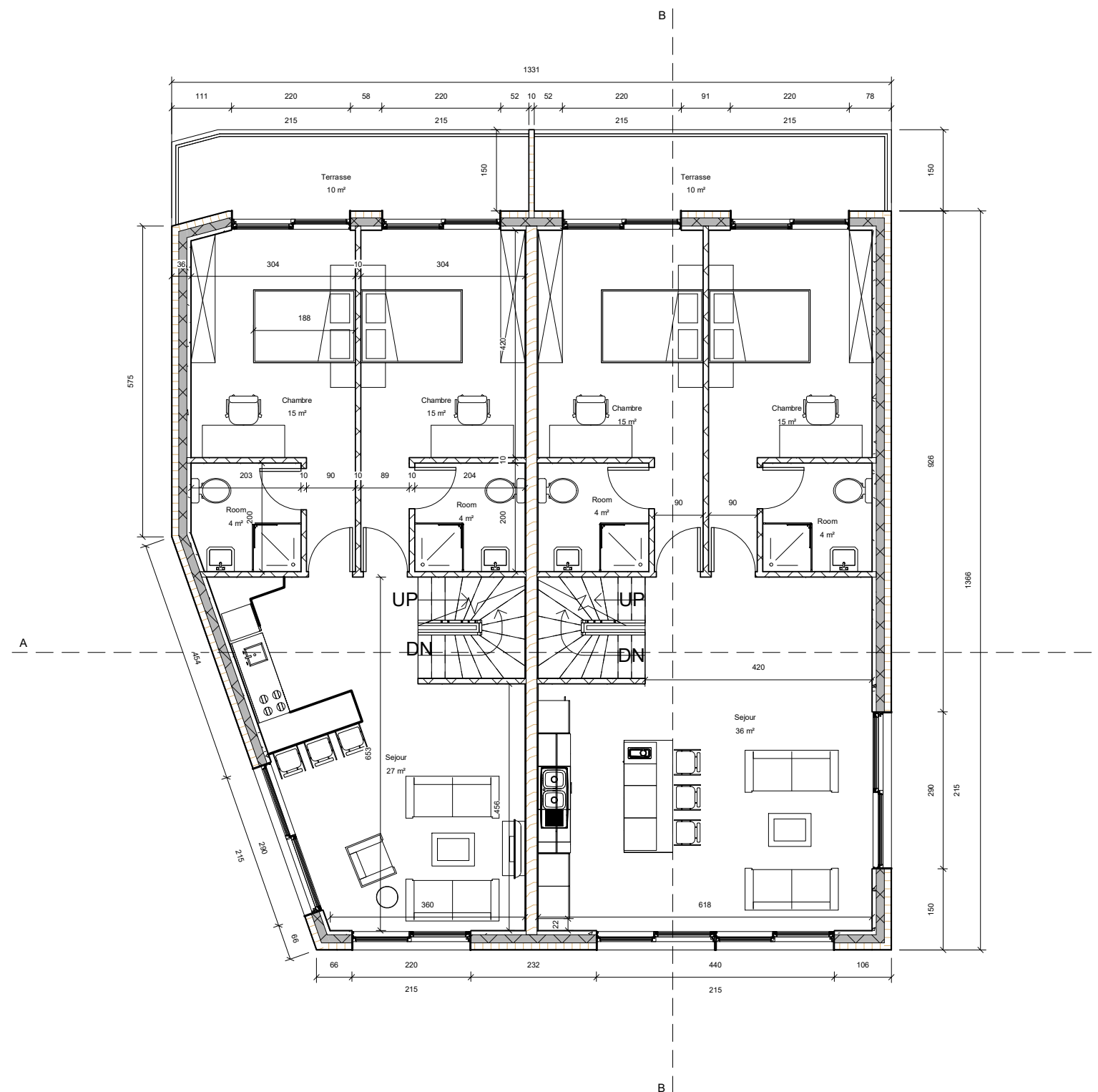
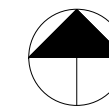
Plan Sous-sol

3975 Crans-Montana

Parcelle 885

1 : 100





next

La Meije

VISA Architecte

29 septembre 2023

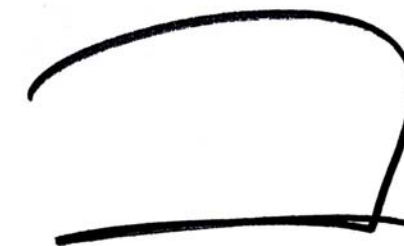
Dossier PC

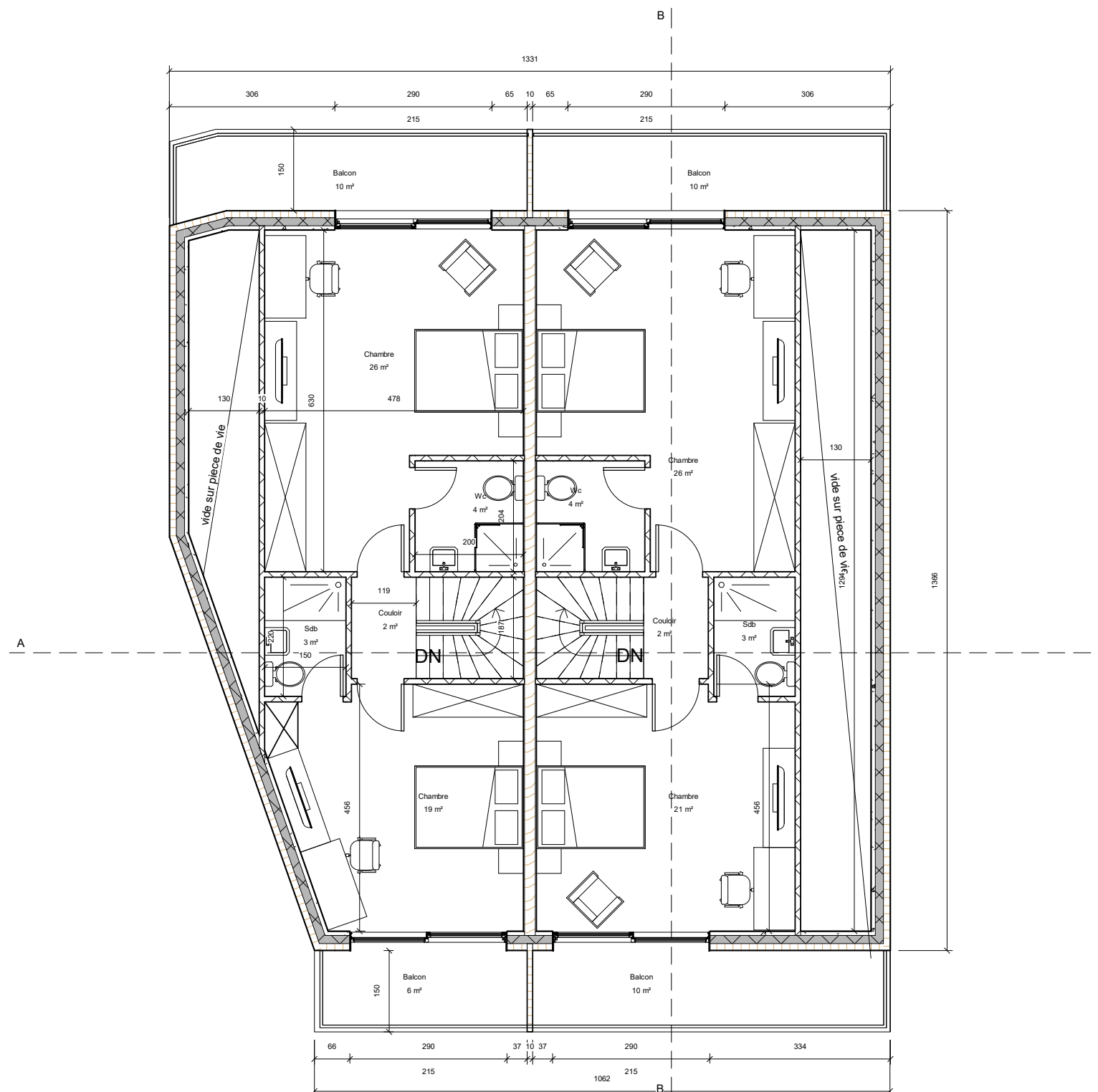
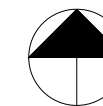
Plan Rez de Jardin

3975 Crans-Montana

Parcelle 885

1 : 100





next

La Meije

VISA Architecte

29 septembre 2023

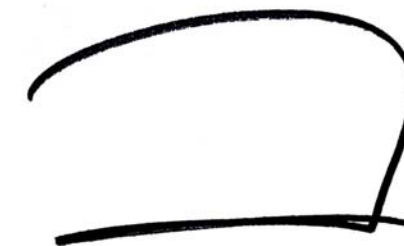
Dossier PC

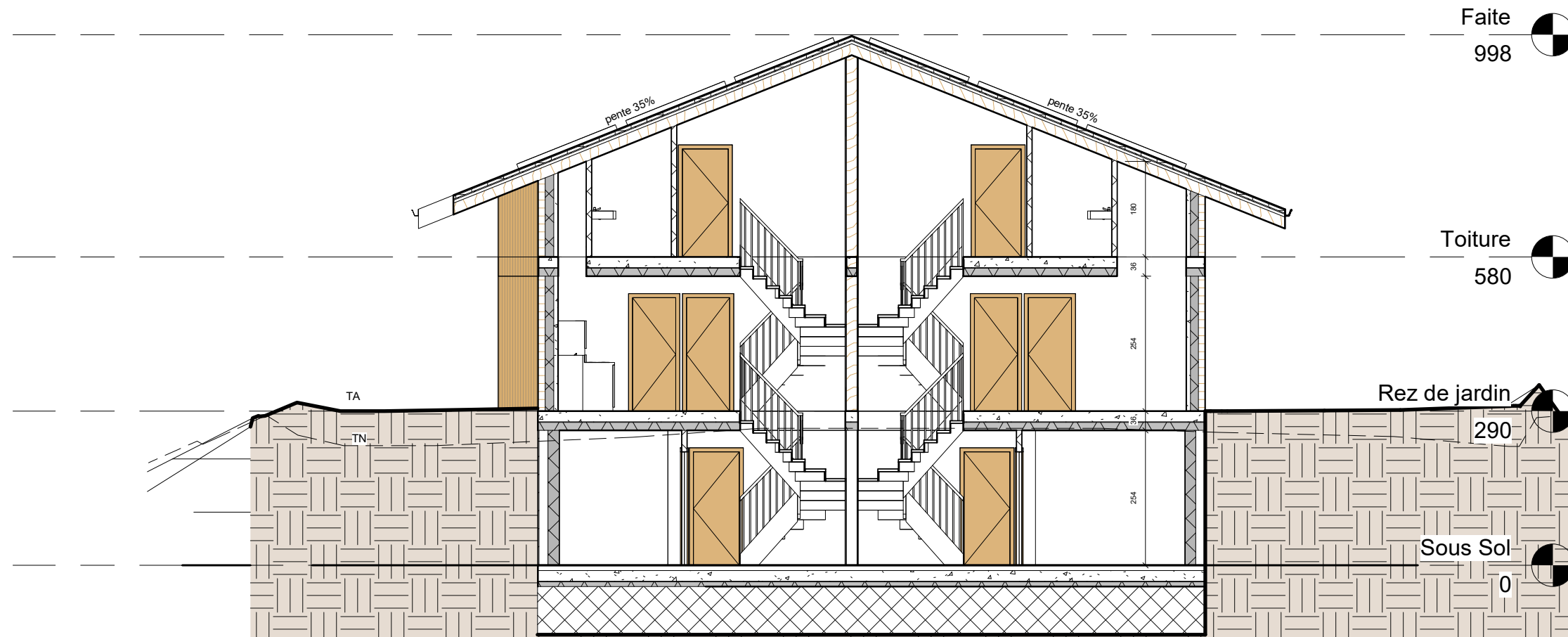
Combles

3975 Crans-Montana

Parcelle 885

1 : 100





next

La Meije

VISA Architecte

29 septembre 2023

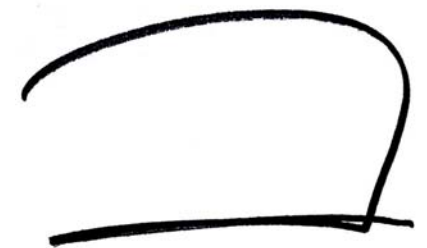
Dossier PC

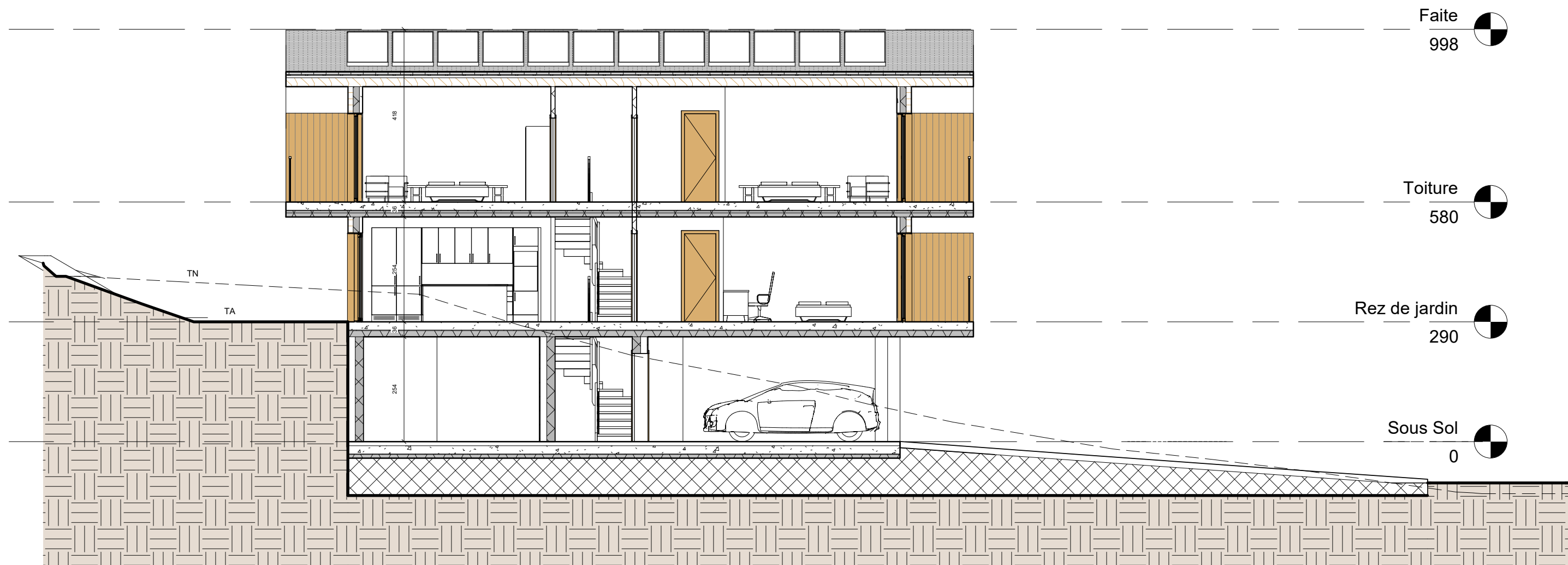
Coupe A-A

3975 Crans-Montana

Parcelle 885

1 : 100





next

La Meije

VISA Architecte

29 septembre 2023

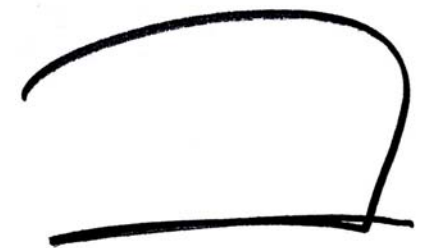
Dossier PC

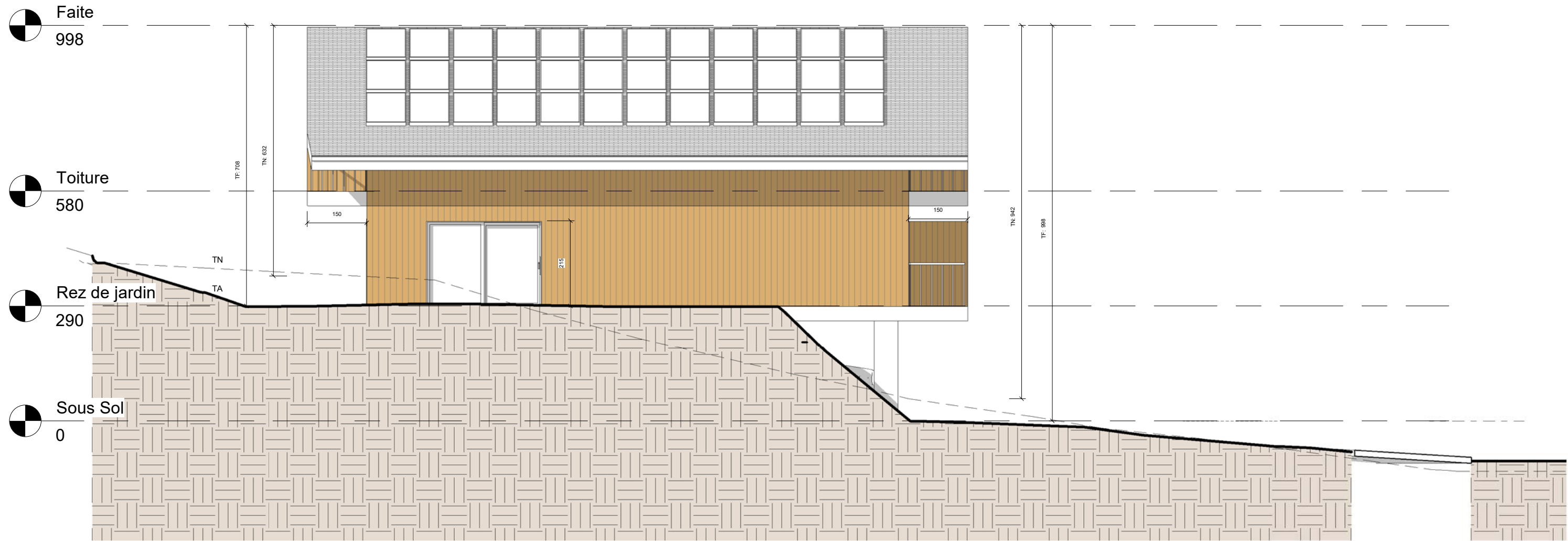
Coupe B-B

3975 Crans-Montana

Parcelle 885

1 : 100





next

La Meije

VISA Architecte

29 septembre 2023

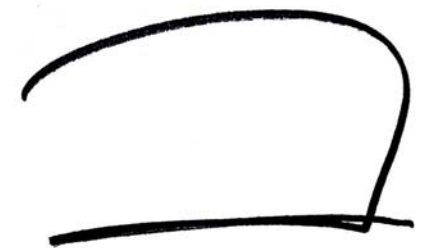
Dossier PC

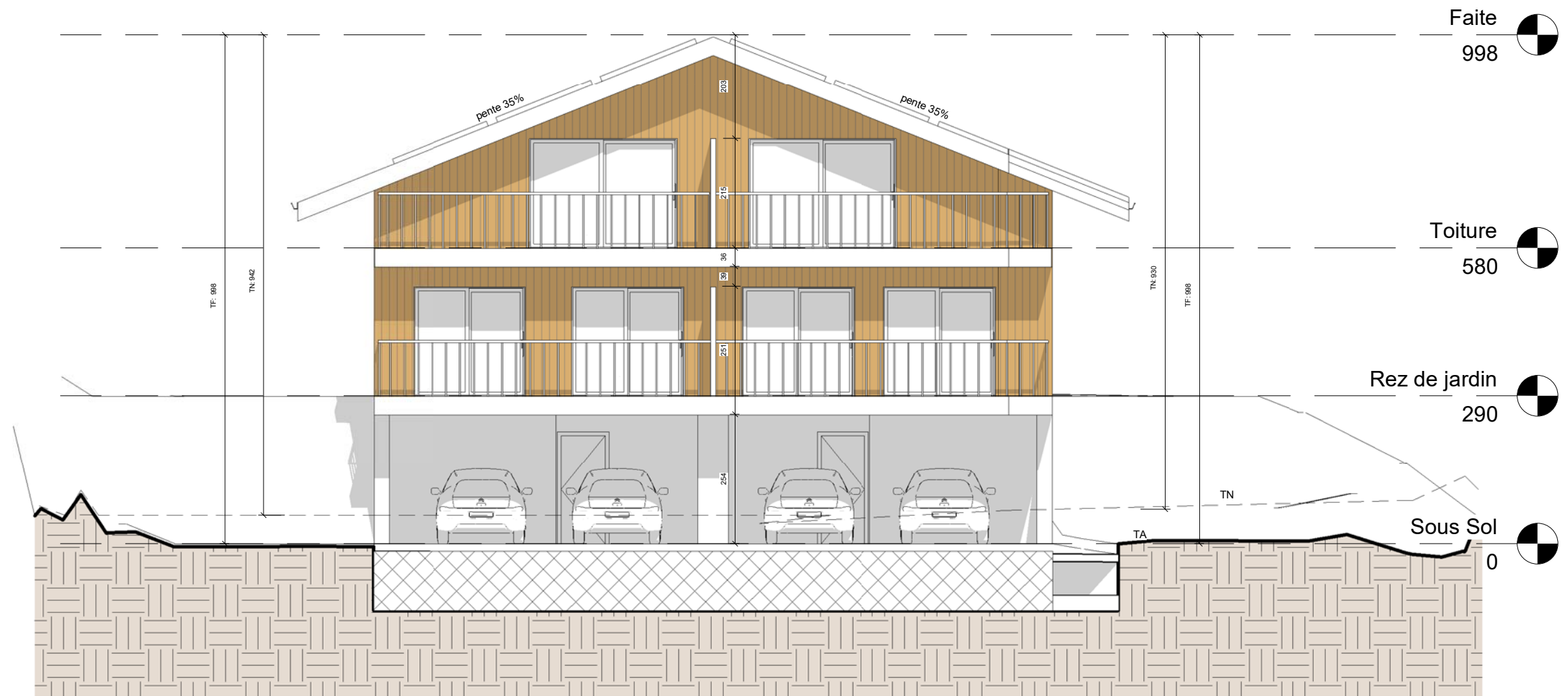
Facade Est

3975 Crans-Montana

Parcelle 885

1 : 100





next

La Meije

VISA Architecte

29 septembre 2023

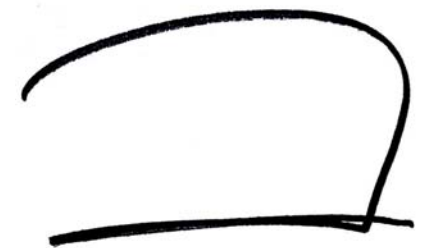
Dossier PC

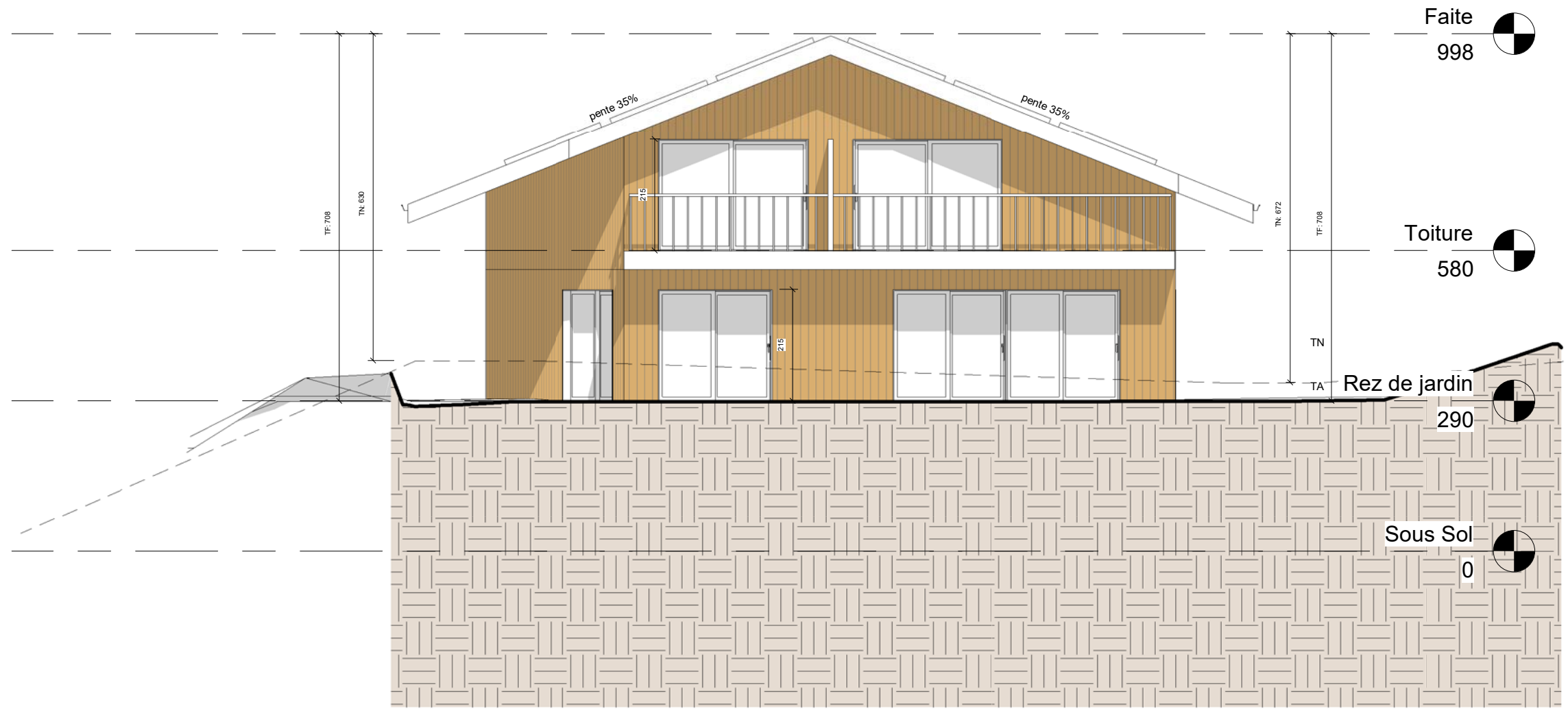
Facade Nord

3975 Crans-Montana

Parcelle 885

1 : 100





next

La Meije

VISA Architecte

29 septembre 2023

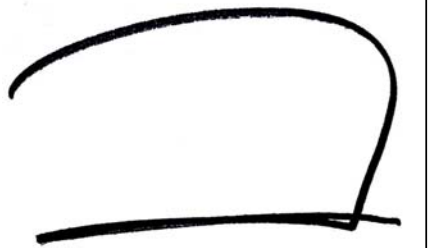
Dossier PC

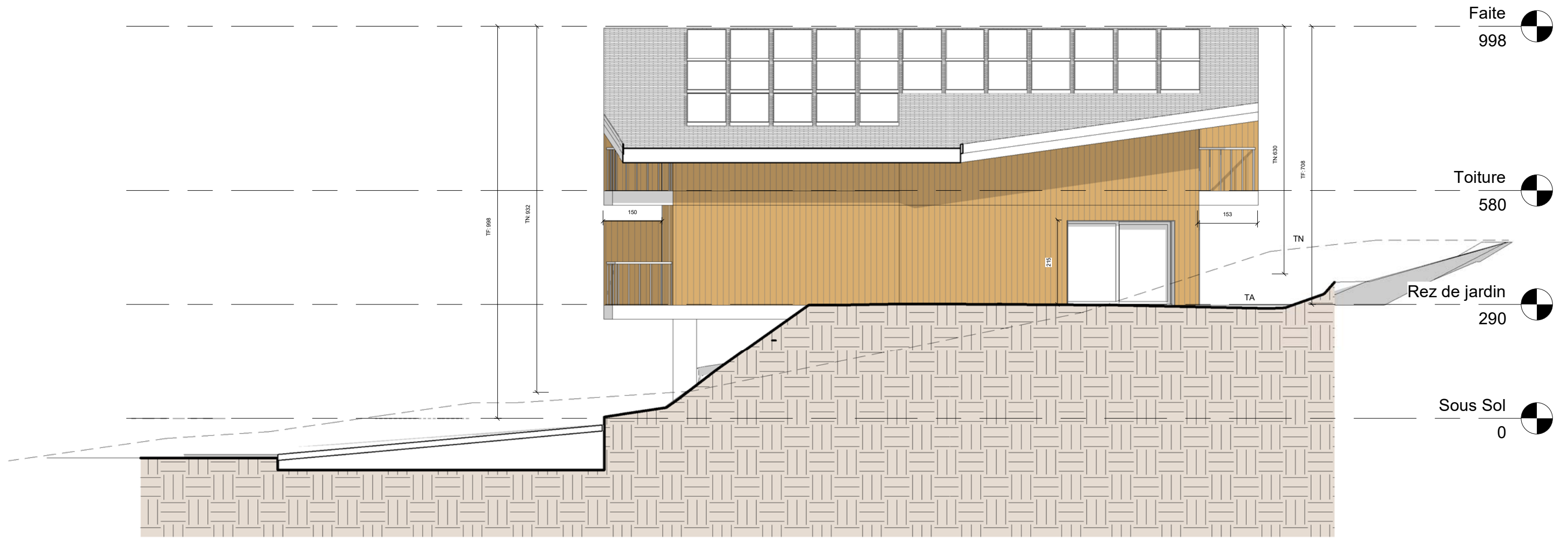
Facade Sud

3975 Crans-Montana

Parcelle 885

1 : 100





next

La Meije

VISA Architecte

29 septembre 2023

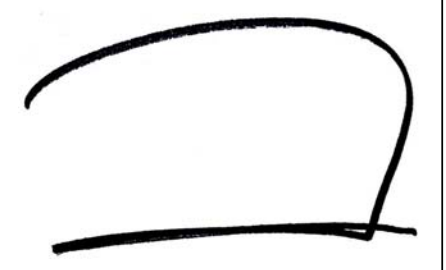
Dossier PC

Facade Ouest

3975 Crans-Montana

Parcelle 885

1 : 100





next

La Meije

VISA Architecte

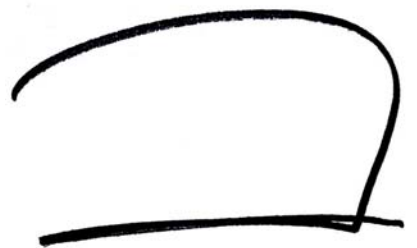
29 septembre 2023

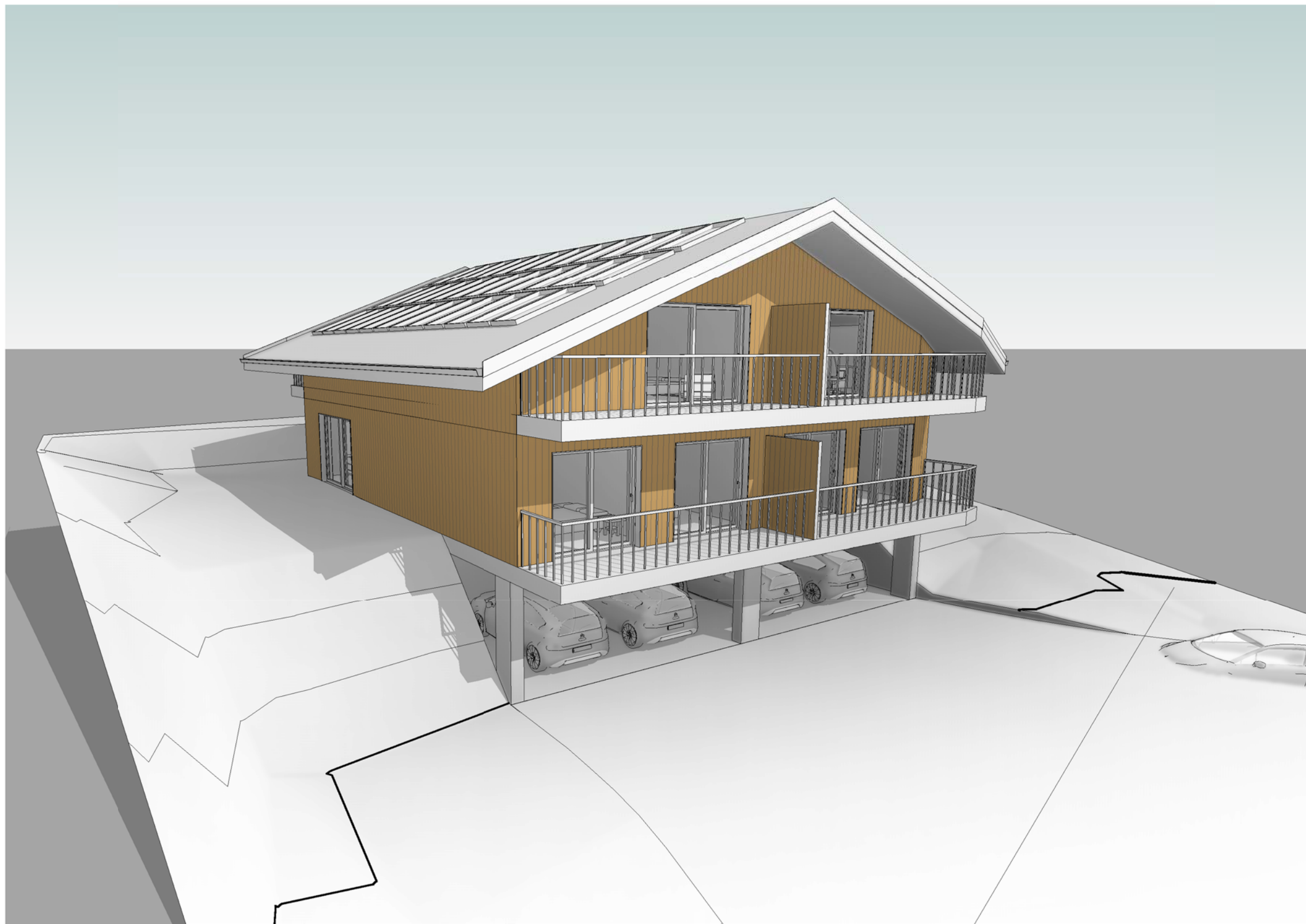
Dossier PC

Perspective

3975 Crans-Montana

Parcelle 885





next

La Meije

VISA Architecte

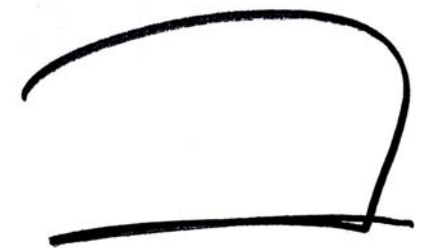
29 septembre 2023

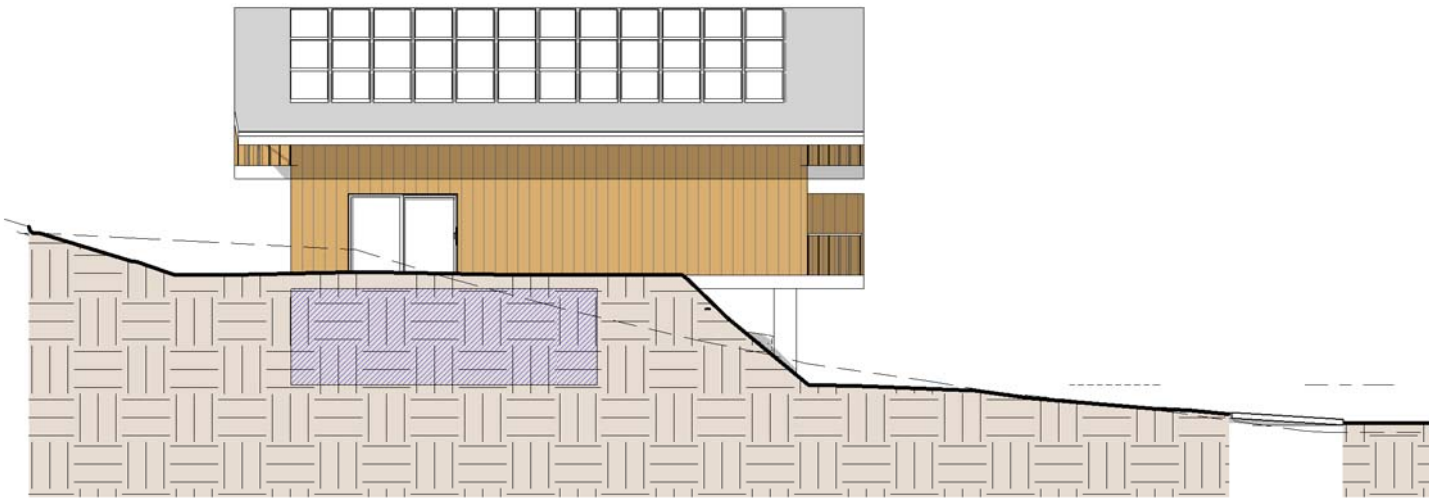
Dossier PC

Perspective

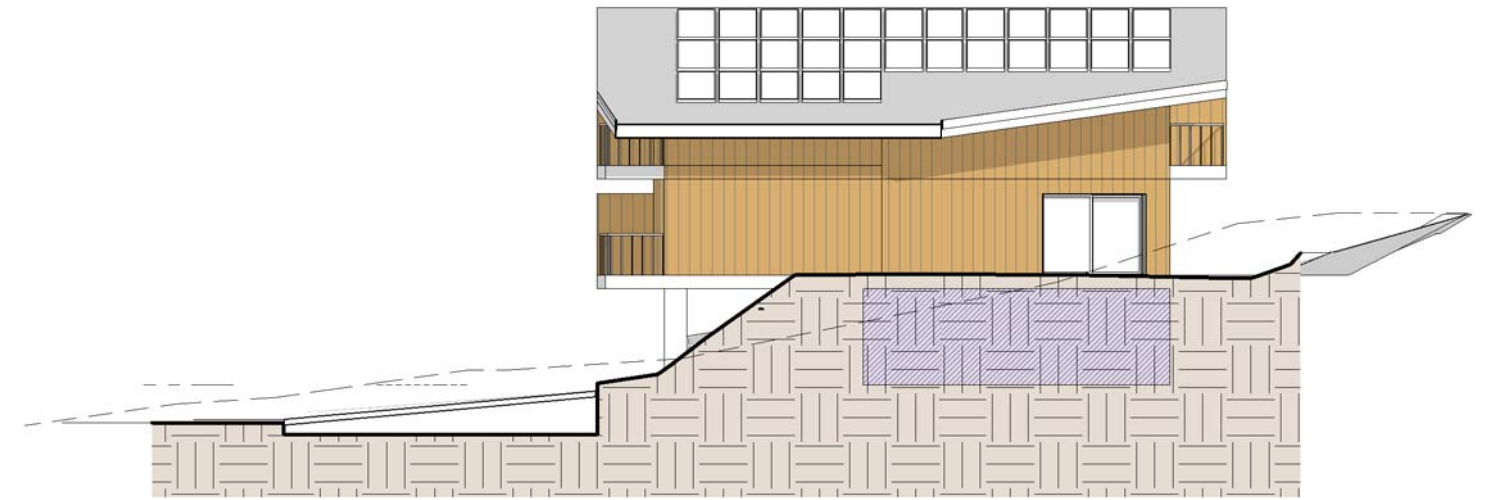
3975 Crans-Montana

Parcelle 885





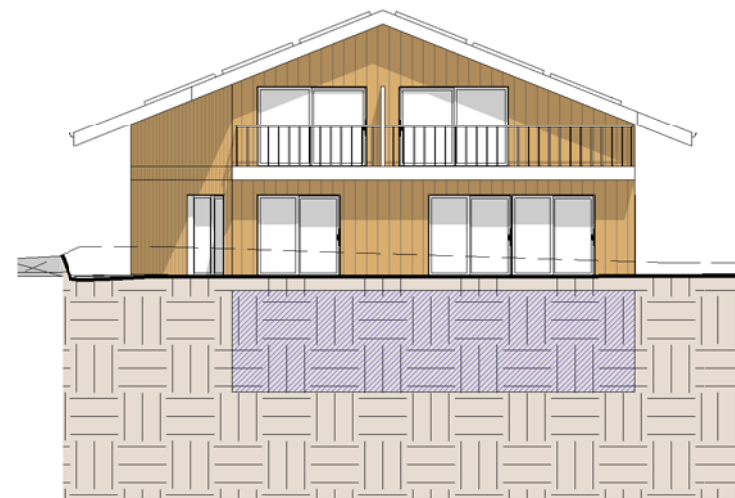
Surface facade Est : 20.60 m²
 Surface emergee : 0.00 m²
 Surface enterree : 20.60 m²



Surface facade Ouest : 20.60 m²
 Surface emergee : 0.00 m²
 Surface enterree : 20.60 m²



Surface facade Nord : 33.78 m²
 Surface emergee : 33.78 m²
 Surface enterree : 0.00 m²



Surface facade Sud : 28.58 m²
 Surface emergee : 0.00 m²
 Surface enterree : 28.58 m²

Surface totale Facades :

$20.60 \times 2 + 33.78 + 28.58 = 103.56 \text{ m}^2$

Surface emergee autorisee : $\frac{2}{3} \times 103.56 = 69.04 \text{ m}^2$

Surface enterree minimale : $\frac{1}{3} \times 103.56 = 34.52 \text{ m}^2$

Surface **emergee** des facades : **33.78 m²**

Surface **enterree** des facades :

$20.6 \times 2 + 28.58 = 69.78 \text{ m}^2$

next

La Meije

VISA Architecte

29 septembre 2023

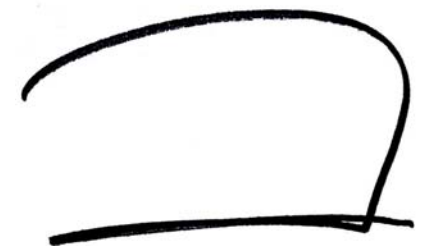
Dossier PC

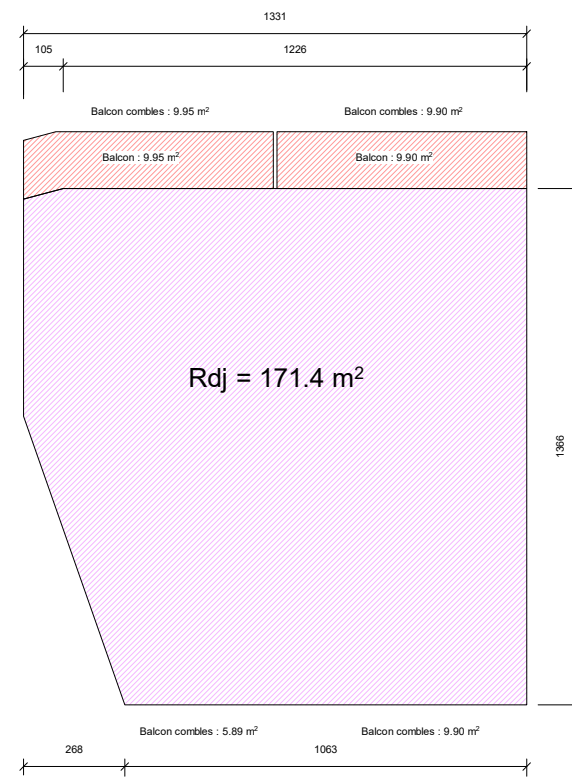
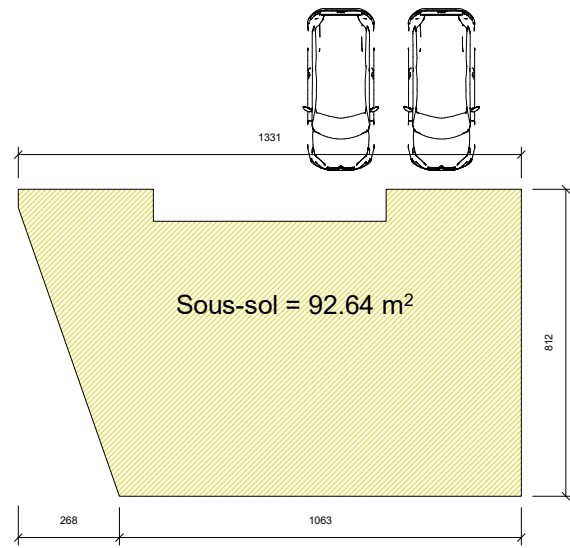
surface enterree

3975 Crans-Montana

Parcelle 885

1 : 200





Volume SIA 116 :

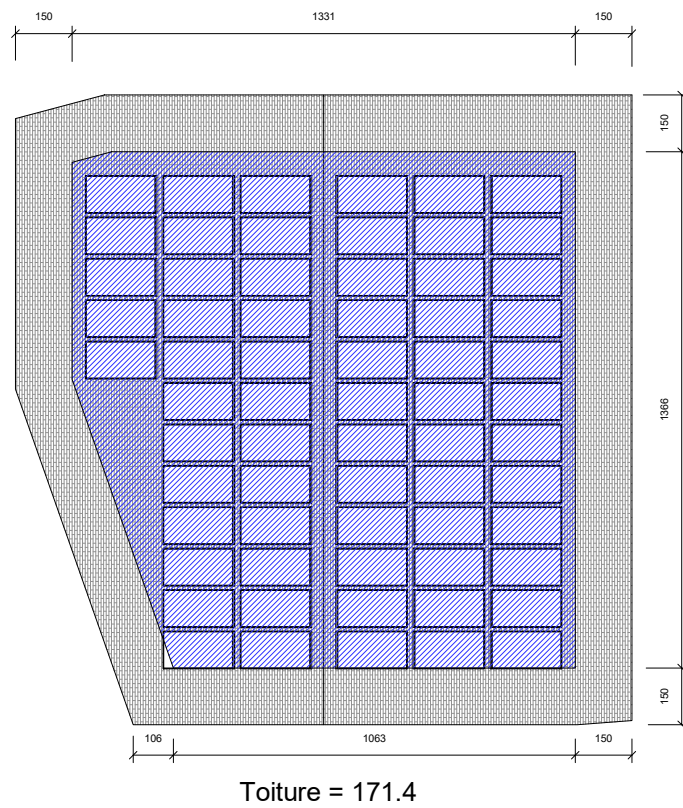
Sous-sol : $92.64 \times 2.94 = 272.36 \text{ m}^3$

Rdj : $171.4 \times 4.40 = 754.16 \text{ m}^3$

Toiture : $171.4 \times 1.65 = 282.81 \text{ m}^3$

Balcon : $((9.95 \times 2) + (9.90 \times 3) + 5.89) \times 1.36 = 75.46 \text{ m}^3$

Volume SIA 116 : 1384.79 m³



next

La Meije

VISA Architecte

29 septembre 2023

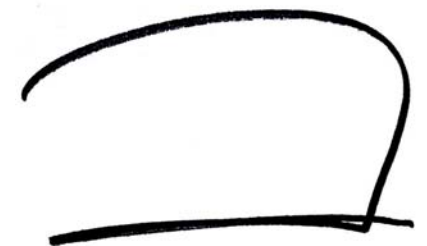
Dossier PC

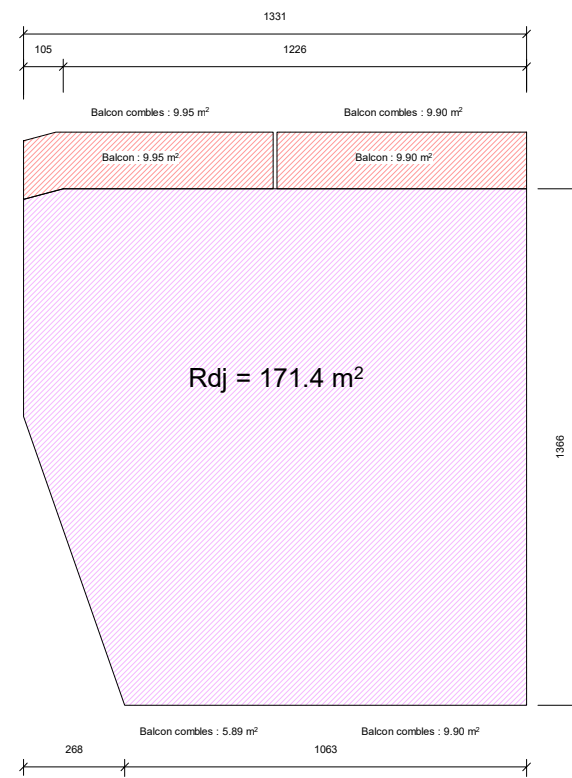
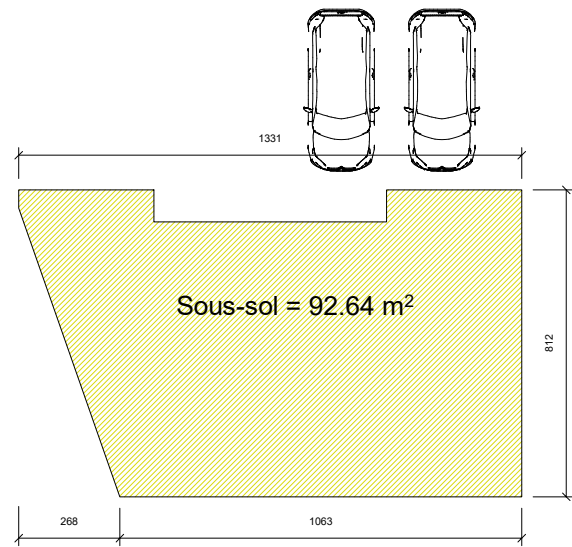
Volume SIA 116

3975 Crans-Montana

Parcelle 885

1 : 200





Volume SIA 416 :

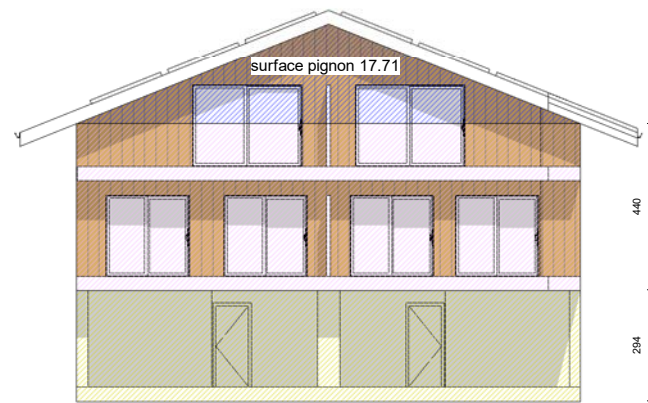
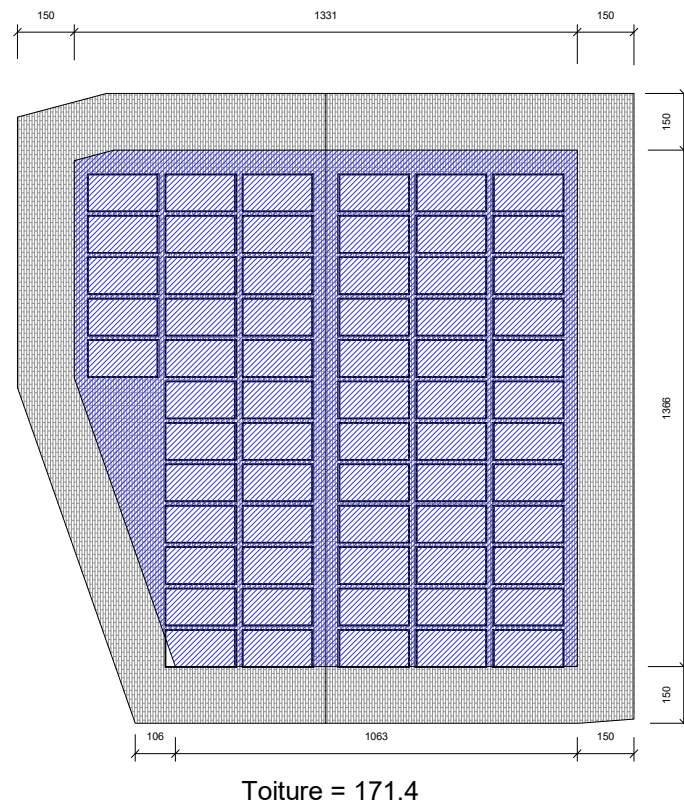
Sous-sol : $92.64 \times 2.94 = 272.36 \text{ m}^3$

Rdj : $171.4 \times 4.40 = 754.16 \text{ m}^3$

Toiture : $17.71 \times 13.66 = 241.92 \text{ m}^3$

Balcon : $((9.95 \times 2) + (9.90 \times 3) + 5.89) \times 0.36 = 19.97 \text{ m}^3$

Volume SIA 416 : 1288.41 m³



next

La Meije

VISA Architecte

29 septembre 2023

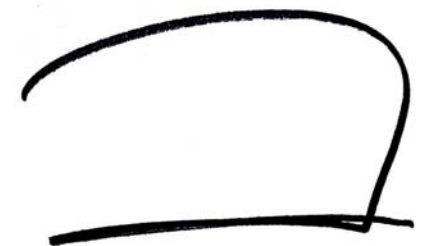
Dossier PC

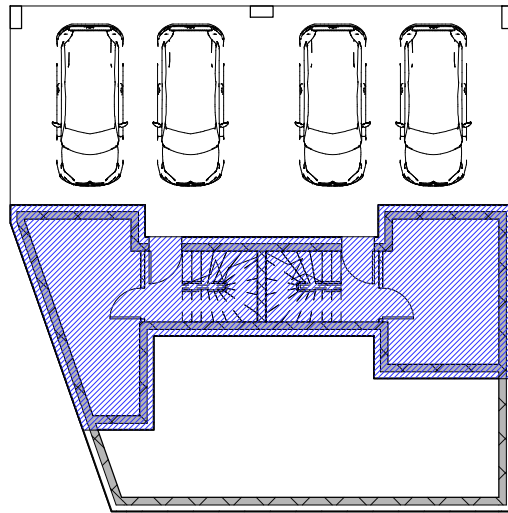
Volume SIA 416

3975 Crans-Montana

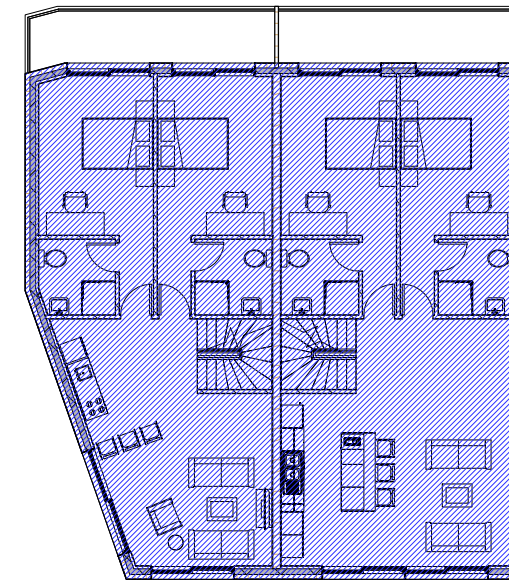
Parcelle 885

1 : 200

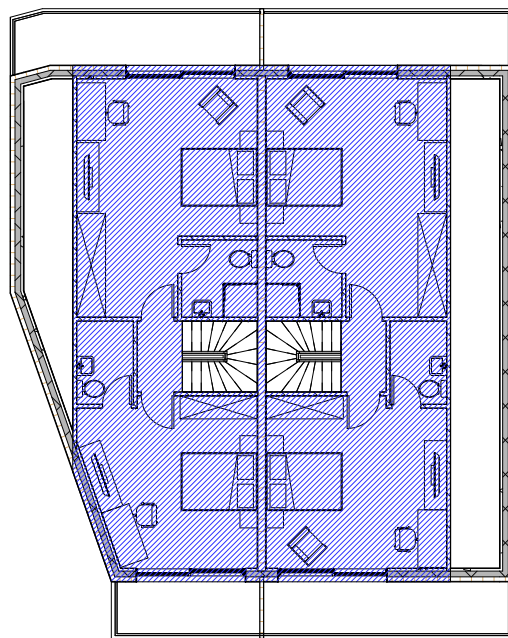




SP Sous-sol = 49.4 m²



SP Rdj = 171.4



SP Toiture = 127.6 m²

Surface Plancher :

Surface plancher : 49.4 + 171.4 + 127.6 = **348.4 m²**

Surface terrain determinante : **698 m²**

Indice IBUS de la parcelle : 0.5

Indice IBUS du projet : 348.4 / 698 m² = **0.49**

next

La Meije

VISA Architecte

29 septembre 2023

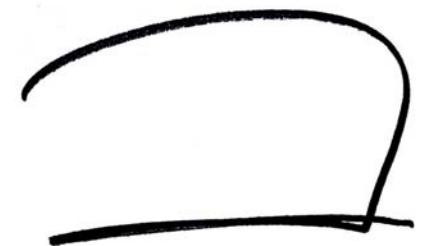
Dossier PC

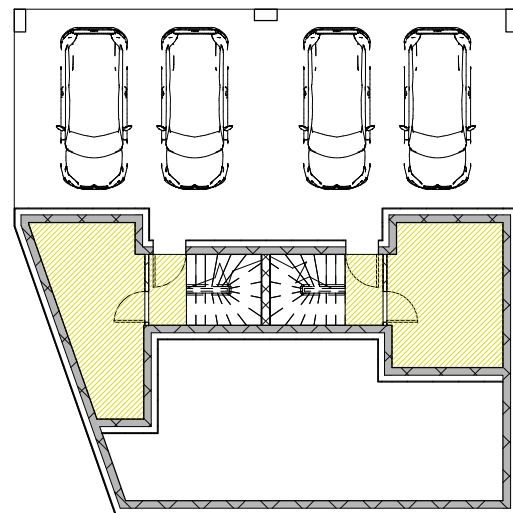
Surface SP

3975 Crans-Montana

Parcelle 885

1 : 200

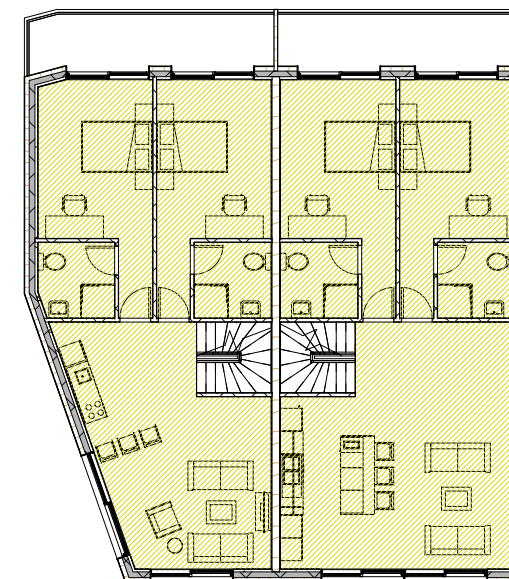




Apt 1 sous-sol = 12.89 m²

Apt 2 sous-sol = 13.29 m²

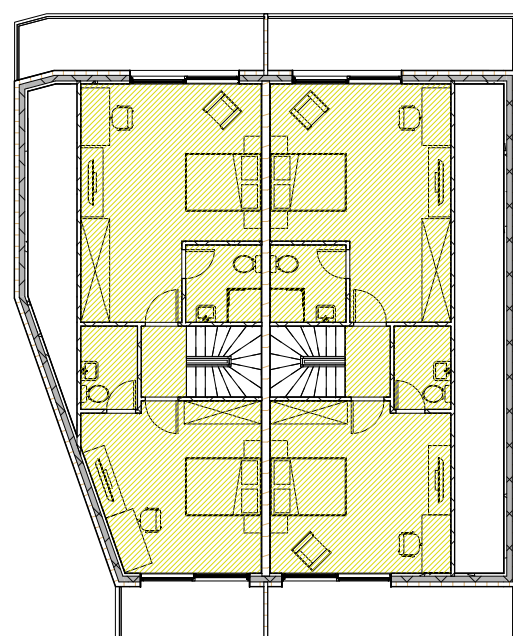
Surface habitable nette Sous-sol = 26.19 m²



Apt 1 Rdj = 64.40 m²

Apt 2 Rdj = 73.88 m²

Surface habitable nette Rdj = 138.28 m²



Apt 1 Toiture = 54.50 m²

Apt 2 Toiture = 56.46 m²

Surface habitable nette Toiture = 110.96 m²

Surface habitable nette :

appartement 1 : 12.89 + 64.40 + 54.50 = **131.79 m²**

appartement 2 : 13.29 + 73.88 + 56.46 = **143.63 m²**

Surface habitable nette : 275.43 m²

next

La Meije

VISA Architecte

29 septembre 2023

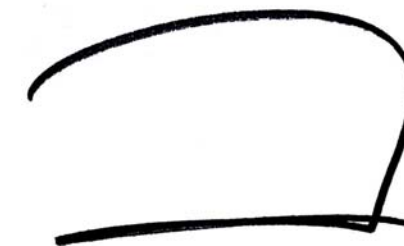
Dossier PC

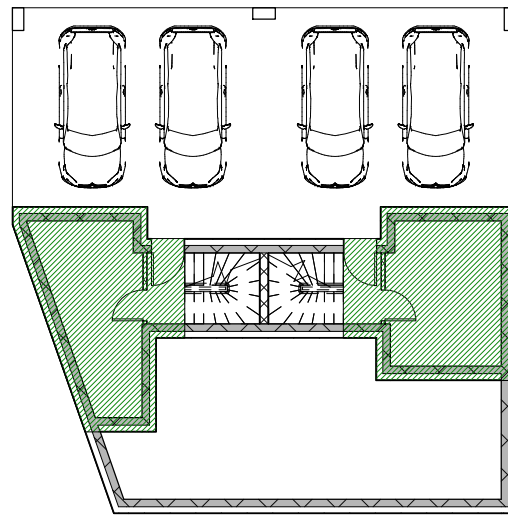
Surface habitable nette

3975 Crans-Montana

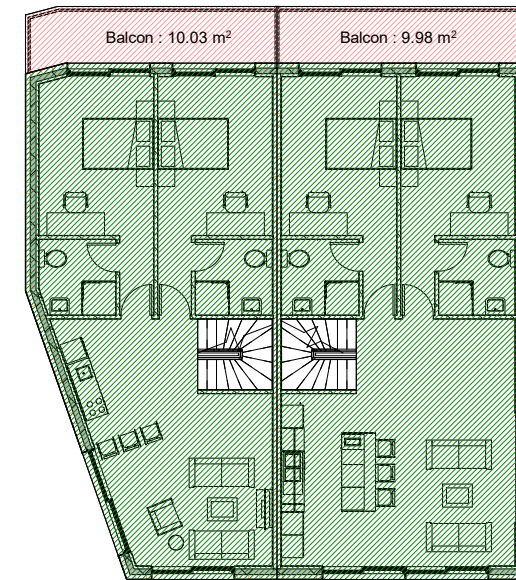
Parcelle 885

1 : 200

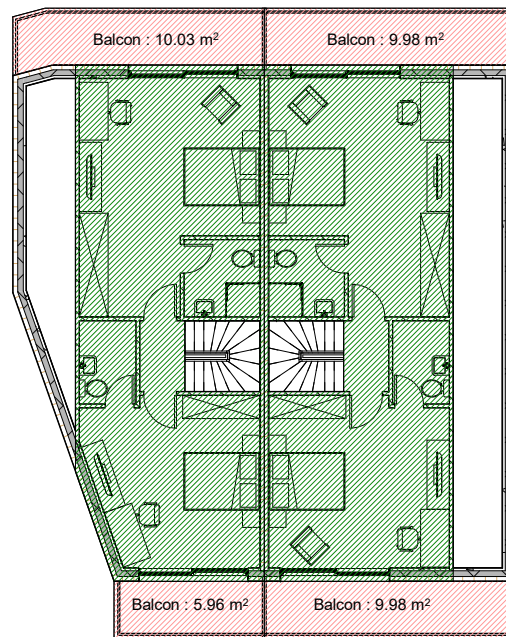




SBPU Apt 1 Sous-sol = 19.20 m² SBPU Apt 2 Sous-sol = 19.15 m²



SBPU Apt 1 Rdj = 76.83 m² SBPU Apt 2 Rdj = 87.20 m²



SBPU Apt 1 Toiture = 63.07 m² SBPU Apt 2 Toiture = 64.55 m²

Surface de vente :

appartement 1 : $19.20 + 76.83 + 63.07 + ((10.03 \times 2 + 5.96) \times 0.5) = 172.11 \text{ m}^2$

appartement 2 : $19.15 + 87.20 + 64.55 + ((9.98 \times 3) \times 0.5) = 185.87 \text{ m}^2$

Surface de vente : 357.98 m²

next

La Meije

VISA Architecte

29 septembre 2023

Dossier PC

Surface de vente

3975 Crans-Montana

Parcelle 885

1 : 200

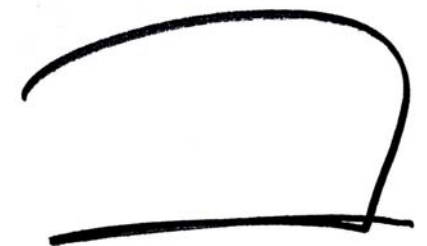


Tableau des volumes et surfaces

Volumes SIA 116	1384.79 m ³
Volumes SIA 416	1288.41 m ³
Surface plancher	348.4 m ²
SBPU	330 m ²
Surface habitable nette	275.43 m ²
Surface de vente	357.98 m ²
IBUS	0.499

next

29 septembre 2023

3975 Crans-Montana

La Meije

Dossier PC

Parcelle 885

Tableau des volumes et
surfaces

VISA Architecte

